

OverThruster Installation

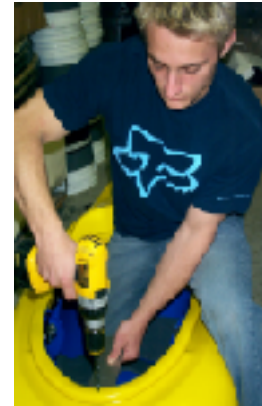
1. Line up the OverThruster so that it is centered on the front of your cockpit rim and mark where the rivet hole is to be drilled (Fig. 1)

Fig. 1



2. Drill a 11/32" hole at the mark. (If you do not have an 11/32" bit, a 3/8" hole will work as well.) Be very careful that you do not drill any further than the upper rim plastic. We use a thin peice of metal solid between the upper and lower rim to prevent over drilling (Fig 2).

Fig. 2



3. Do not be afraid to trim the OverThruster to fit. If the thigh braces interfere with the OverThruster put the OverThruster in place and trace the area that needs to be cut out (Fig. 3). Make sure that you smooth all the rough edges that have been cut. Sand the edges with 220 grit sand paper once you have your final shape (Fig.4).

Fig. 3

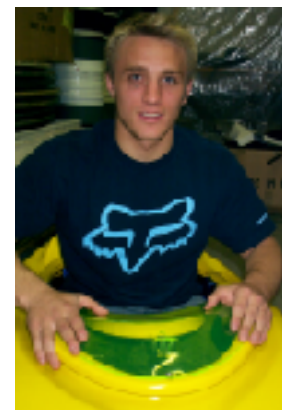


Fig. 4



Note: the OverThruster should pop off the rim effortlessly without the rivit binding. If the rivit binds, oval out the hole.

Fig. 5



Happy Paddling!